

# OKADA

臺灣岡田精機股份有限公司  
TAIWANOKADAMACHINERYCO.,LTD.

# ROTARY TABLES

## 無背隙滾子式轉臺



### 精密研發 創新工藝



高精度  
HIGH PRECISION



高剛性  
HIGH RIGIDITY



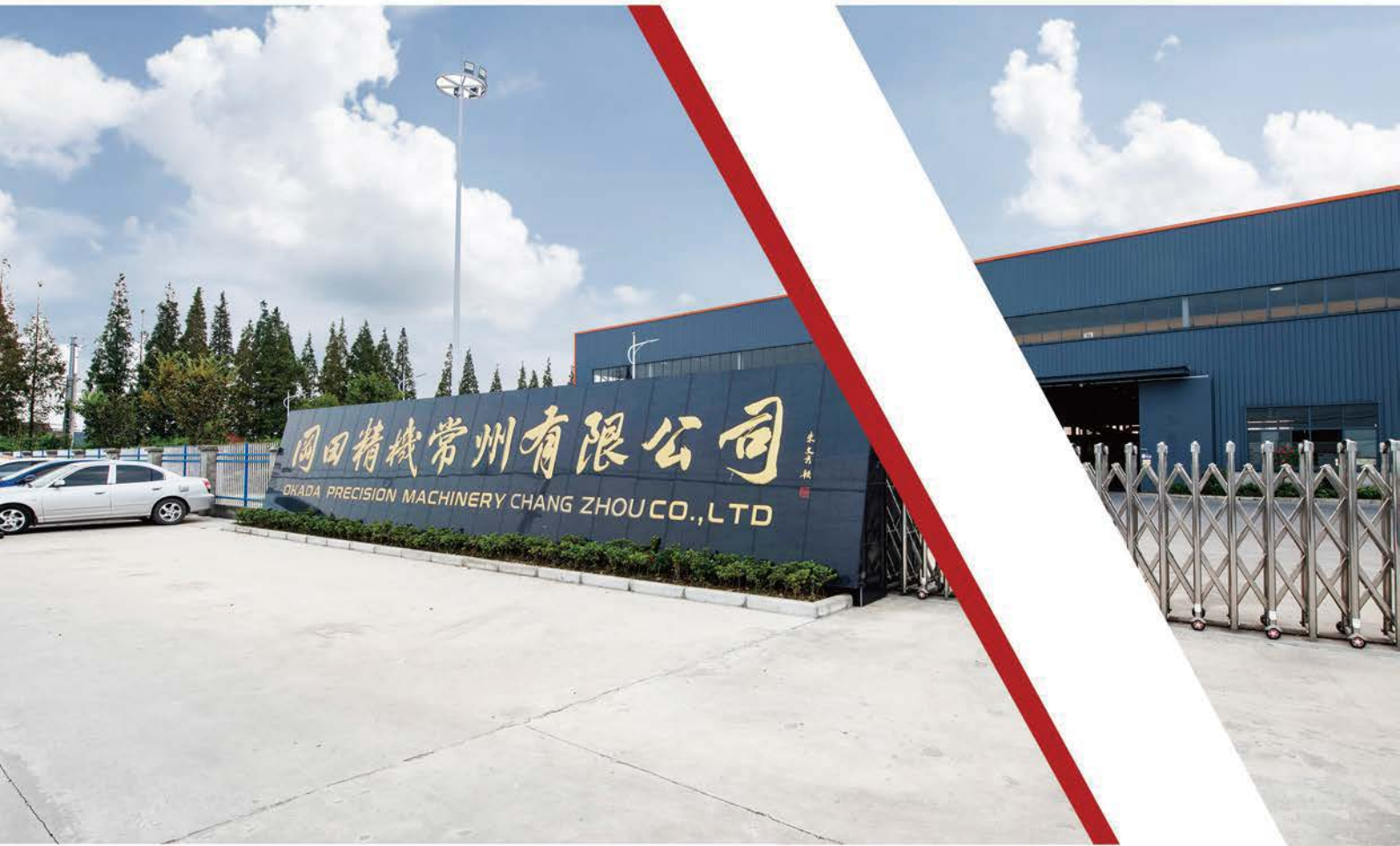
高速度  
HIGH SPEED



長壽命  
DURABILITY



**OKADA**



# HIGH PRECISION SPINDLE

「精密研發 創新工藝」

高精度 | 高剛性 | 高速度 | 長壽命

HIGH PRECISION HIGH RIGIDITY HIGH SPEED DURABILITY



## 公司簡介 Company profile

---

臺灣岡田精機股份有限公司於 2015 年 12 月公司在大陸地區成立二分廠，岡田精機（常州）有限公司，專業設計研發、製造工具機精密四軸。岡田精機（常州）有限公司占地面積 50 畝，2.8 萬平方米生產車間，其中無塵恒溫車間 1.2 萬平方米。集團公司目前現有員工共 460 餘人，其中技術人員占 20%，主要技術人員、生產人員及管理人員在瑞士、日本、臺灣的四軸行業及機床配件業界均有 10 年以上之工作經驗，在同行業達到領先水準。

Okada Precision Machinery (Changzhou) Co., Ltd., the second branch of Taiwan Okada Precision Machinery Co., Ltd. in mainland China and established in December 2015, engages in designing, developing and manufacturing precision rotary table for machine tools. It covers an area of 50 mu and 28,000 m<sup>2</sup> of production workshops, including 12,000 m<sup>2</sup> of dust-free and constant temperature workshops.

At present, the Group has more than 460 employees, of which 20% are technical personnel. Its main technical personnel, production personnel and management personnel have more than 10 years of working experience in the rotary table industry and machine tool parts industry in Switzerland, Japan and Taiwan, and have reached the leading level in the field.



## 品質管控 - 公司目前擁有的主要檢測設備：

- 德國蔡司三座標測量儀
- 英國泰勒真圓度測量儀
- 臺灣基泰克臥式動平衡一批
- 德國戴博（HSK 拉力計、測試棒）檢具一批
- 瑞典海克斯康三座標測量儀
- 德國申克動平衡儀
- 臺灣基泰克頻譜儀、臺灣基泰克掌上型動平衡儀一批
- 德國凱獅（HSK 拉力計、測試棒）檢具一批
- 瑞士 TESA 測量儀、日本三豐檢測設備一批（三豐二次元、高度規、表面粗糙度儀、電子數顯硬度儀、數顯卡尺、內外徑千分尺等）

## 生產控管 - 公司目前擁有的主要生產加工設備：

大型數控龍門加工中心 10 臺；日本大衛、美國辛辛那提等數控臥式加工中心 26 臺，日本馬紮克、日本 OKK、美國辛辛那提等立式數控加工中心 100 餘臺，臺灣 CNC 精密旋轉平面磨床 4 臺，臺灣跑合測試系統 4 條專線，各類型精密數控車床 20 餘臺，精密數控磨床 20 餘臺。

公司擁有高品質、高速精密四軸設計技術能力。成立至今，本著超越自我要求、超越標準品質為目標，以掌握（高精度、高穩定、高剛性、高效率）等四高特性。臺灣岡田精機股份有限公司將以雄厚的人才力量為後盾，先進的技術力量為指導，科學的管理體制為方針，持續不斷努力，竭誠為您服務，共同前進！

## QUALITY CONTROL—THE MAIN TESTING EQUIPMENT CURRENTLY OWNED BY THE COMPANY:

- Trilinear coordinates measuring instrument from German Zeiss
- Trilinear coordinates measuring instrument from Sweden Hexagon
- Roundness measuring instrument from British Taylor Hobson
- Balancer from German Schenck Process
- A batch of horizontal balancer from Taiwan Kitech
- A batch of spectrum analyzer and hand-held balancer from Taiwan Kitech
- A batch of inspection tools (HSK tension meters and test bars) from German Diebold
- A batch of inspection tools (HSK tension meters and test bars) from German KELCH
- A batch of TESA measuring instruments from Switzerland and MITUTOYO testing equipment from Japan (including MITUTOYO image measurement instrument, height gauge, surface roughness meter, electronic digital hardness tester, digital caliper, and inside/outside micrometer)

## PRODUCTION CONTROL—THE MAIN PRODUCTION AND PROCESSING EQUIPMENT CURRENTLY OWNED BY THE COMPANY:

10 large-scale CNC gantry machining centers; 26 horizontal CNC machining centers from OKUMA in Japan and CINCINNATI in the United States; more than 100 vertical CNC machining centers from MAZAK in Japan, OKK in Japan and CINCINNATI in the United States; 4 CNC precision rotary surface grinders from Taiwan; 4 special lines for running-in testing systems from Taiwan; more than 20 precision CNC lathes; more than 20 precision CNC grinding machines.

Taiwan Okada Precision Machinery Co., Ltd. has the ability to design high-quality, high-speed and precise rotary table. Since its establishment, the Company takes the aim of exceeding itself and the standard quality to master high precision, high stability, high rigidity, and high efficiency. Taiwan Okada Precision Machinery Co., Ltd. will make continuous efforts to serve you wholeheartedly and advance together, backed by abundant talents, guided by advanced technology and scientific management system.

## 機型頁碼索引 Model page index

說明 ILLUSTRATE	機型代碼 MODEL CODE		頁碼 PAGE NUMBER
	公司簡介Company Profile		01~03
	檢測設備、生產實力Testing equipment, production strength		05~09
	滾子凸輪原理Roller cam principle		10~12
0.001°任意角度立式轉臺 0.001° vertical turntable at any angle	GTR系列:小型機(電機右置型) GTR series: small machine (right-mounted motor)	GTR80、GTR125	13-14
	GTR系列:氣刹+油刹(電機右置型) GTR series: air brake + oil brake (right-mounted motor)	GTR170、GTR200、GTR255	13-16
	GTR系列:油刹(電機右置型) GTR series: Oil brake (right-mounted motor)	GTR255H、GTR320、GTR400、GTR500	15-18
單臂式雙軸(五軸)0.001° Single arm double axis (five axis) 0.001°	GTA系列 GTA series	GTA80、GTA130X	19-20
雙臂式雙軸(五軸)0.001° Double arm type double axis (five axis) 0.001°	GTA系列 GTA series	GTA170L、GTA200、GTA255	21-22
0.001°任意角度臥式轉臺 0.001° horizontal turntable at any angle	GTHX系列:油刹(電機右置型) GTHX series: Oil brake (right-mounted motor)	GTH500、GTH630、GTH800、GTH1000	23-25
1°齒式油刹臥式轉臺 1° gear oil brake horizontal turntable	GWH系列 GWHseries	GWH500-C、GWH630-C、GWH800-C、GWH1000-C	26-27
0.001°任意角度雙交換轉臺 0.001°Any angle double exchange turntable	GTH雙交換系列 GTH double exchange series	GTH500A、GTH630A、GTH800A	28-29
托板式交換臺 Pallet exchange table	滾子凸輪系列 Roller cam series	GPC500	30-31
	滾子凸輪+油壓系列 Roller cam + hydraulic series	GPC630Y	30-31
	油壓排齒系列 Hydraulic gear series	GPC800P	30-31
雙工作臺及托盤交換臺 Double table and pallet changer	GTH630A+GPC630Y		30
	GTH800A+GPC800P		30
圓盤尾座 Disc tailstock	GTS系列 GTSseries	GTS170、GTS200、GTS255、GTS320	32
手動頂針尾座 Manual thimble tailstock	GTT系列 GTTseries	GTT170、GTT200、GTT255、GTT320	33
附錄Appendix	功能附件+電氣配線示意圖+刹車控制說明+精度檢查項目+轉臺規格選擇表 Functional accessories + electrical wiring diagram + brake control instructions + accuracy check items + turntable specification selection table		34~38

## 先進的制造與檢測設備

Advanced manufacturing and testing equipment

專業研發團隊 Professional R & D team

全方位服務客戶 Full-service customers

精密制造檢測設備 Precision manufacturing testing equipment

恒溫恒濕加工廠房 Constant temperature and humidity processing processing plant

瑞士 TESA 測高儀

TESA altimeter, Switzerland



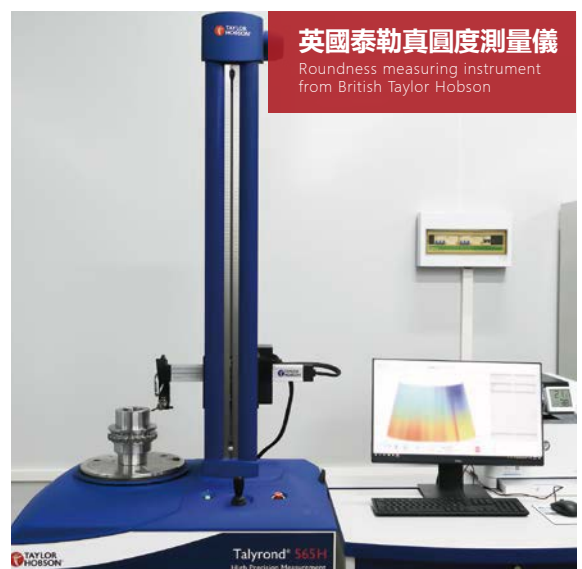
日本 MITUTOYO 測高儀

Japan Mitutoyo altimeter



英國泰勒真圓度測量儀

Roundness measuring instrument from British Taylor Hobson





## 日本東京精密三坐標

Precision Coordinates in Tokyo, Japan



## 瑞典海克斯康三坐標測量儀

Trilinear coordinates measuring instrument from Sweden Hexagon



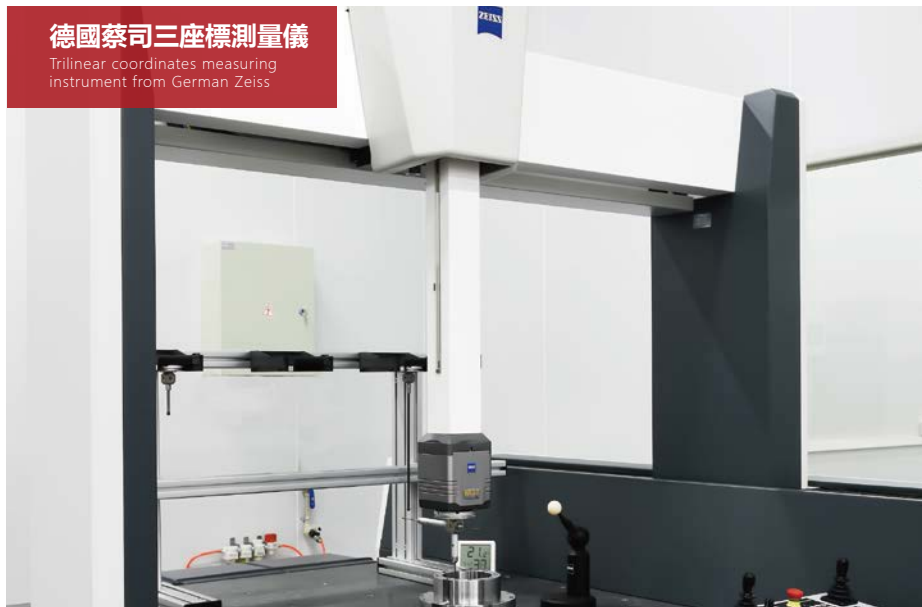
## 日本 MITUTOYO 內外徑千分尺

Japan MitsuToyo inside/outside micrometer



## 德國蔡司三坐標測量儀

Trilinear coordinates measuring instrument from German Zeiss



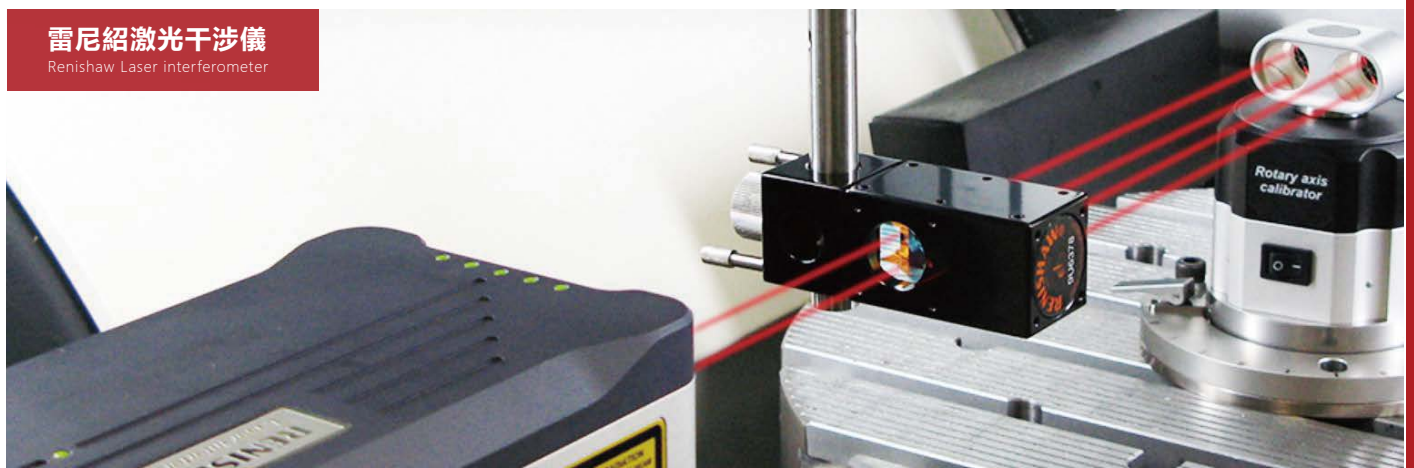
## 日本 MITUTOYO 洛氏硬度計

MITUTOYO Rockwell Hardness Testing Machines



## 雷尼紹激光干涉儀

Renishaw Laser interferometer



## 生產實力 Production Strength

日本马扎克机床

Japan Mazak machine tool



台湾福裕磨床

Taiwan Fuyu grinding machine



高精度旋轉磨床

High precision rotary grinding machine





## 生產實力 Production Strength

研磨設備

Grinding equipment



瑞士克林伯格磨床

Swiss Klingberg grinding machine



研磨設備

Grinding equipment



GTR200



OKADA

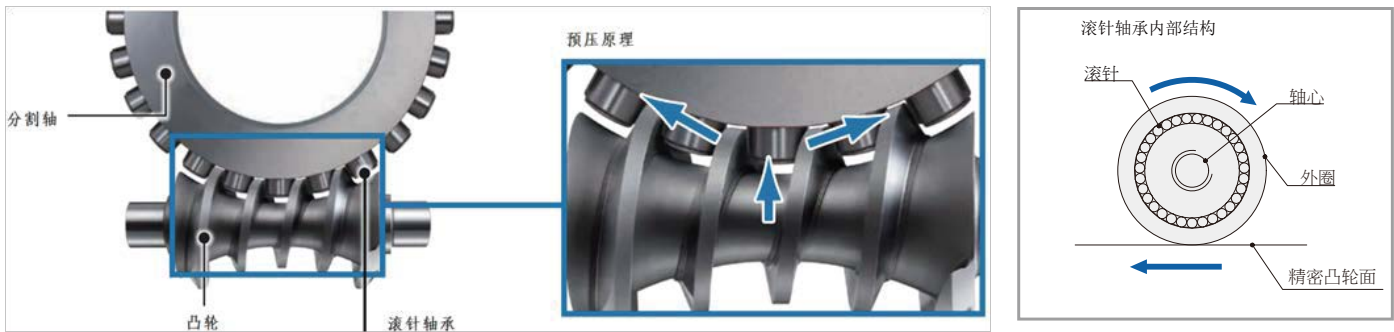
## ROTARY TABLES

無背隙滾子式轉臺

高精度 | 高剛性 | 高速度 | 長壽命

HIGH PRECISION HIGH RIGIDITY HIGH SPEED DURABILITY

## 滾子式凸輪傳動原理 Exclusive zero-backlash construction



## 滾子式凸輪傳動特點 Exclusive zero-backlash characteristics

### ● 無背隙 Zero-backlash

滾子與凸輪滾動傳動，無正向和反向背隙問題，提升滾子與凸輪的超精密特殊，降低裝配難度，提高品質。

Roller and CAM rolling transmission, no forward and reverse back gap problems, improve the roller and CAM ultra-precision special, reduce the difficulty of assembly, improve the quality.

### ● 高效率傳動 High efficiency drive

滾子與凸輪滾動傳動，減少磨耗，傳動效率高，高速運轉時傳動效率高達 90% 以上。

Roller and CAM rolling transmission, reduce wear, high transmission efficiency, high speed operation transmission efficiency up to 90%.

### ● 不產生熱變位 There is no thermal displacement

高速運轉下，降低磨耗。減少熱變位。

Under high speed operation, reduce wear. Reduce heat displacement.

### ● 免維護 Free maintenance

由於磨耗低，老化性極小，可以長期維護初期精度。

Due to low abrasion and minimal aging, initial precision can be maintained for a long time.

### ● 剎車優越 The brake is superior

在剎車定位時，盤面不會浮動或者傾斜，定位剎車保持在 0.002mm 內，對精加工技術而言是一大突破。

In the positioning of the brake, the disc surface will not float or tilt, positioning the brake to stay within 0.002mm, a breakthrough for finishing technology.

### ● 結構牢固 Firm structure

採用最新 YRT 軸承支持，高剛性，重負載。

Using the latest YRT bearing support, high rigidity, heavy load.



無維護和卓越的性價比 No maintenance and excellent cost performance

無需調整維護和高性價比

No maintenance adjustments and high cost performance

● 蝸輪蝸杆 worm and gear

精度隨著時間下降，需要定期維護才能達到或接近初始精度。

Accuracy decreases over time and regular maintenance is required to achieve or approach the initial accuracy.

● 無背隙滾子 Roller Drive

在 500 萬次運行週期內精度一致，無需維護。

Consistent accuracy over 5 million cycles, no maintenance required.

● 蝸輪蝸杆 worm and gear

每年需要一到二次維護，以調整精度的反彈。

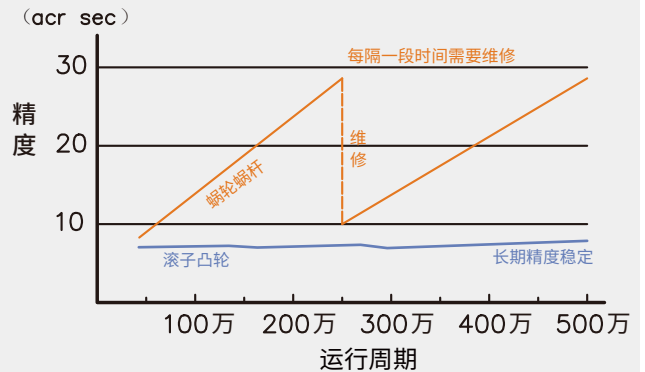
One to two maintenance sessions per year are required to adjust the accuracy of bounces.

● 無背隙滾子 Roller Drive

長期使用無需任何維護。

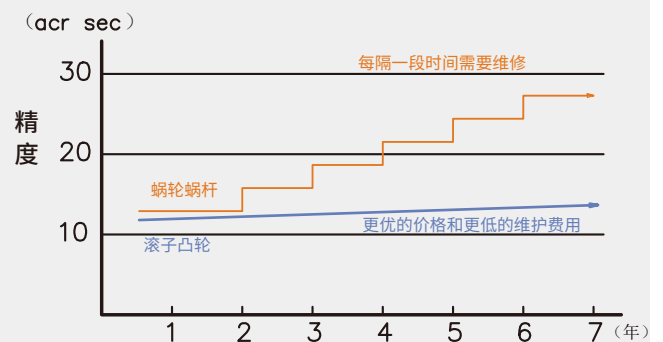
Long-term use does not require any maintenance.

Trend of positioning accuracy



定位精度趨勢

Initial cost and maintenance



初始成本與維護費用

## 無維護和卓越的性價比 No maintenance and excellent cost performance

### 不同加工模式提高效率

Different processing modes improve efficiency

#### ● 蝸輪蝸杆 worm and gear

90 度定位時需要剎車機構加緊來抑制側隙。

The brake mechanism needs to be tightened to suppress the side gap in the 90 degree positioning.

#### ● 無背隙滾子 Roller Drive

零間隙和高剛性不需要夾緊，輕載加工時無需剎車，定位時間減少到約 1/3。

Zero-backlash and high rigidity do not require clamping, light load machining does not require braking, positioning time is reduced to about 1/3.

### 保持絕對的重復定位精度

Different processing modes improve efficiency

蝸輪蝸杆與無背隙滾子 500 萬次分割試驗。

5 million times of segmentation tests for worm gear and Roller Drive.

#### ● 試驗條件：Test conditions

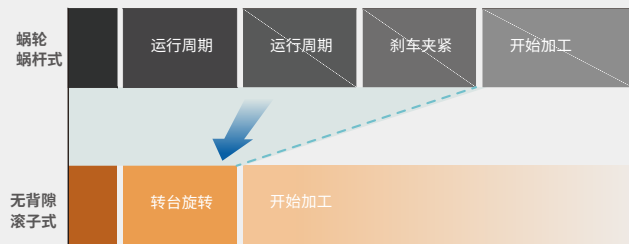
工作臺尺寸 (Table size):  $\phi 170$

慣性容量 Load inertia:  $0.5\text{kgm}^2$

單次分度角度 Index angle:  $36^\circ$

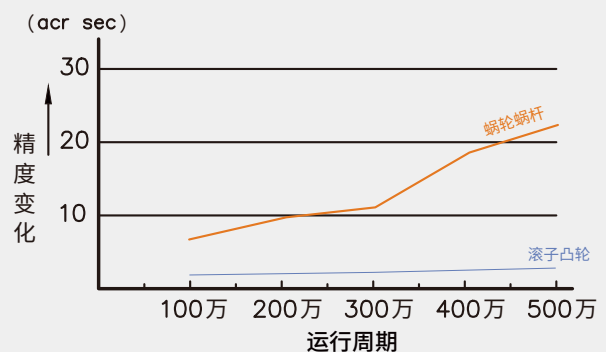
單次分度時間 Indexing time: 0.3sec

### Efficiency comparison in light load processing




### 輕載加工時效率對比

### Variation in repeatable positioning accuracy



### 重復定位精度變化量

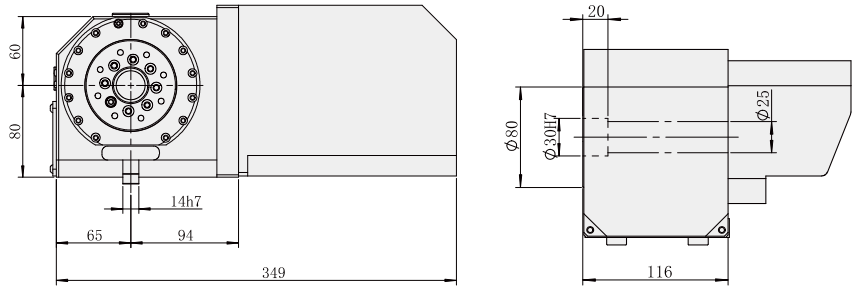
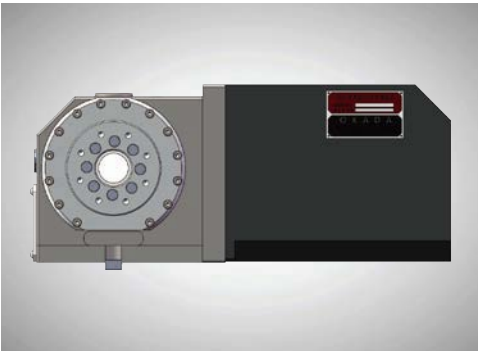
## 機械式樣表 Specification

機種 MODEL		單位 UNIT	GTR80	GTR125	GTR170	
盤面直徑 Disk diameter		mm	φ80	φ125	φ170	
中心高度 Center height		mm	80	110	135	
中心孔径 Center aperture		mm	φ30H7	φ40H7	φ40H7	
貫通孔徑 Through aperture		mm	φ25	φ30	φ40	
盤面T槽寬度 T-slot width		mm	N/A	12H7	12H7	
定位鍵寬度 Positioning key width		mm	14h7	14h7	14h7	
電機標配規格 (直軸電機) (其它規格品牌諮詢定制) Motor standard specification (direct shaft motor) (Other specifications, brand consultation and customization)		FANUC	α	α iF1	α iF1	α iF4
			β	β iF4	β iF4	β iF8
		MITSUBISHI		HF75S	HF75S	HF104S
		SIEMENS		1FK7042	1FK7042	1FK7060
減速比 Reduction ratio			1:30	1:36	1:36	
最高轉速 Maximum speed		r.p.m	100	83	83.3	
最小設定單位 Minimum setting unit		deg	0.001	0.001	0.001	
割出精度 Cutting accuracy		sec	±20	±20	±10	
重復精度 Repeatability		sec	6	6	4	
鎖緊動力源壓力 Lock the power source pressure		MPa	N/A	空壓 air pressure 0.5	油壓/空壓 Oil pressure air pressure 3±0.5/0.5	
最大切削扭矩 (剎車) Maximum cutting torque (brake)		Nm	N/A	100	350/100	
容許 載重 Allowable load	立式安裝 Vertical installation		Kg	60	50	80
	臥式安裝 Horizontal installation		Kg	60	100	160
	立式含尾座 Vertical with tailstock		Kg	60	100	160
容許 負荷 Allowable load	F		N	N/A	10000	13500
	FXL		Nm	N/A	100	350/100
	FXL		Nm	N/A	550	900
容許慣性容量 Allowable inertia capacity		Kg.m <sup>2</sup>	0.2	0.5	0.55	
重量 weight		Kg	20	35	60	

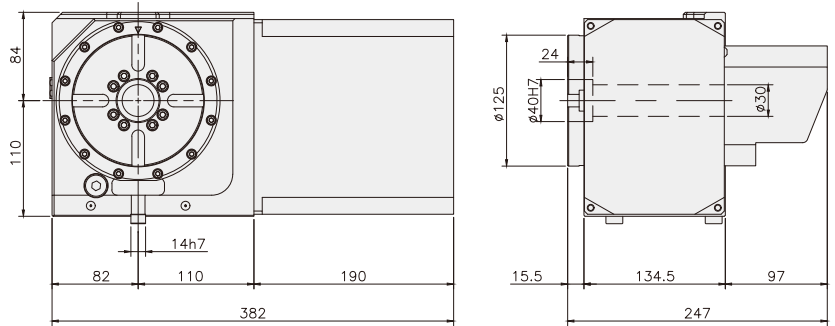
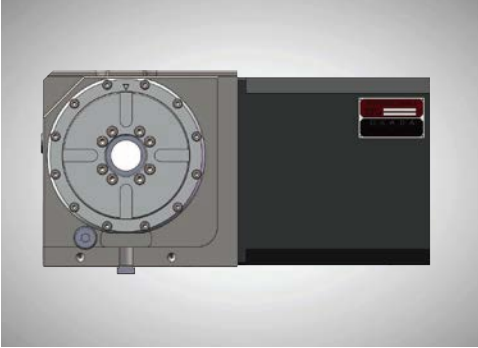


## 機械外型圖 Specification

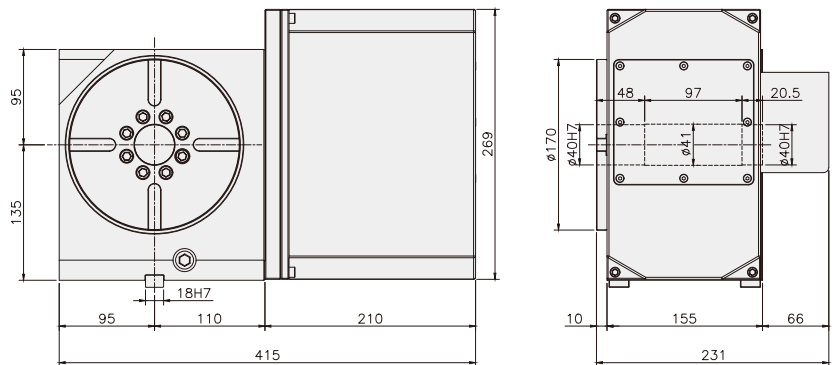
### GTR80




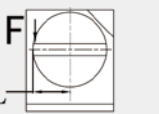
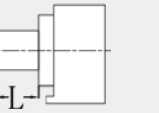
### GTR125



### GTR170

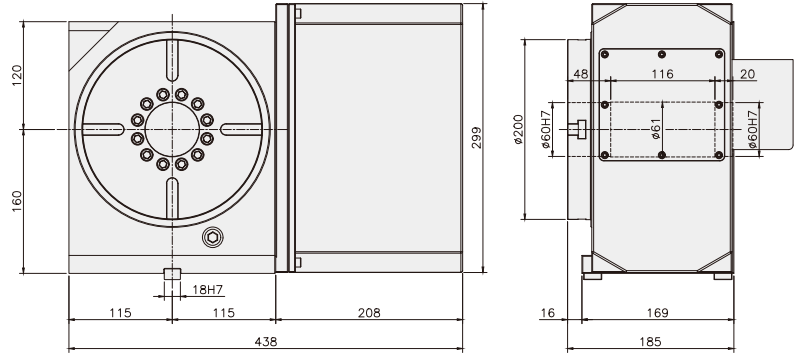


## 機械式樣表 Specification

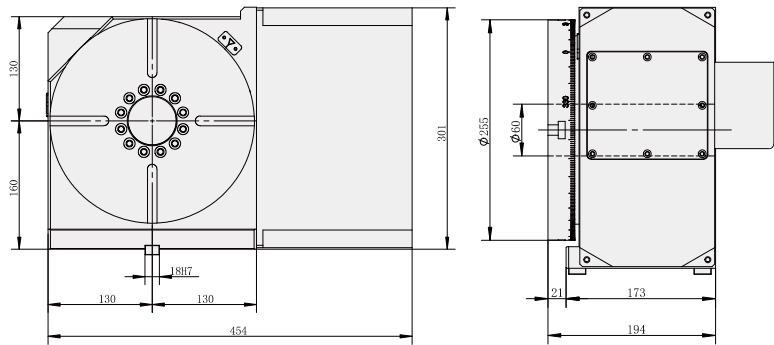
機種 MODEL		單位UNIT	GTR200	GTR255	GTR255H	
盤面直徑 Disk diameter		mm	φ200	φ250	φ255	
中心高度 Center height		mm	160	160	210	
中心孔径 Center aperture		mm	φ60H7	φ60h7	φ80H7	
貫通孔徑 Through aperture		mm	φ60	φ60	φ80	
盤面T槽寬度 T-slot width		mm	12H7	12H7	12H7	
定位鍵寬度 Positioning key width		mm	18h7	18h7	18h7	
電機標配規格(直軸電機) (其它規格品牌諮詢定制) Motor standard specification (direct shaft motor) (Other specifications, brand consultation and customization)		FANUC	α	α iF4	α iF4	α iF8
			β	β iF8	β iF8	β iF12
		MITSUBISHI		HF104S	HF104S	HF154S
		SIEMENS		1FK7060	1FK7060	1FK7063
減速比 Reduction ratio			1:36/50	1:50	1:50	
最高轉速 Maximum speed		r.p.m	83.3/60	60	60	
最小設定單位 Minimum setting unit		deg	0.001	0.001	0.001	
割出精度 Cutting accuracy		sec	±10	±10	±10	
重復精度 Repeatability		sec	4	4	4	
鎖緊動力源壓力 Lock the power source pressure		MPa	油壓/空壓 Oil pressure air pressure 3±0.5/0.5	油壓/空壓 Oil pressure air pressure 4±0.5	油壓 Oil pressure 4±0.5	
最大切削扭矩(剎車) Maximum cutting torque (brake)		Nm	400/115	550	1200	
容許 載重 Allowable load	立式安裝 Vertical installation 	Kg	100	120	160	
	臥式安裝 Horizontal installation 	Kg	220	240	320	
	立式含尾座 Vertical with tailstock 	Kg	220	240	320	
容許 負荷 Allowable load	F 	N	18000	20000	23000	
	FXL 	Nm	440/115	550	1200	
	FXL 	Nm	1300	1500	1900	
容許慣性容量 Allowable inertia capacity		Kg.m <sup>2</sup>	0.85	1	2.2	
重量 weight		Kg	80	90	110	

## 機械外型圖 Specification

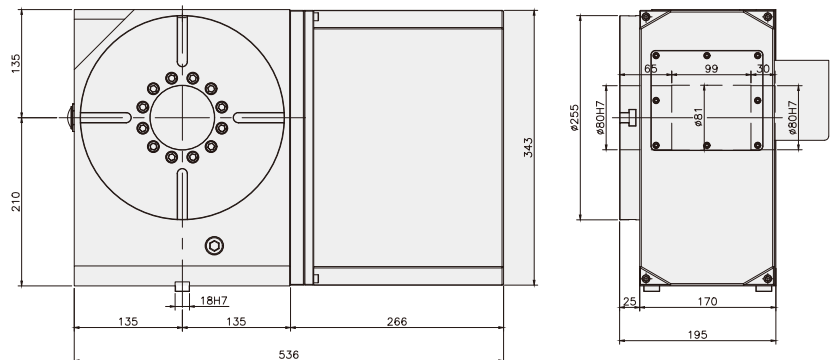
### GTR200



### GTR255


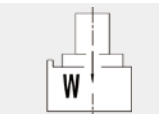
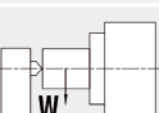


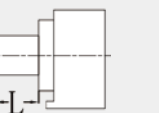


### GTR255H



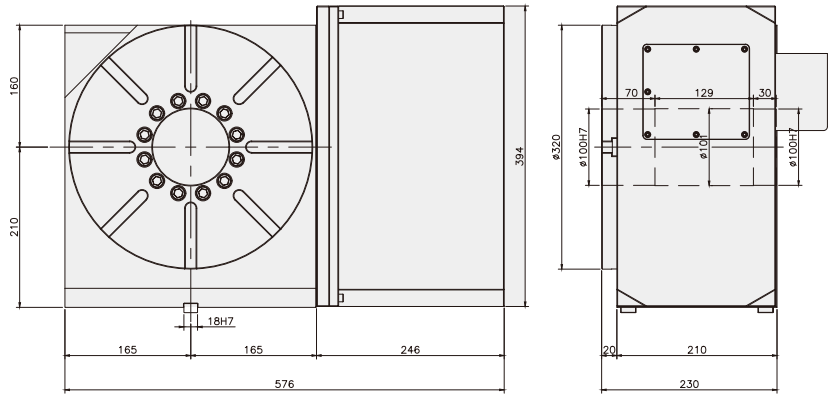


## 機械式樣表 Specification

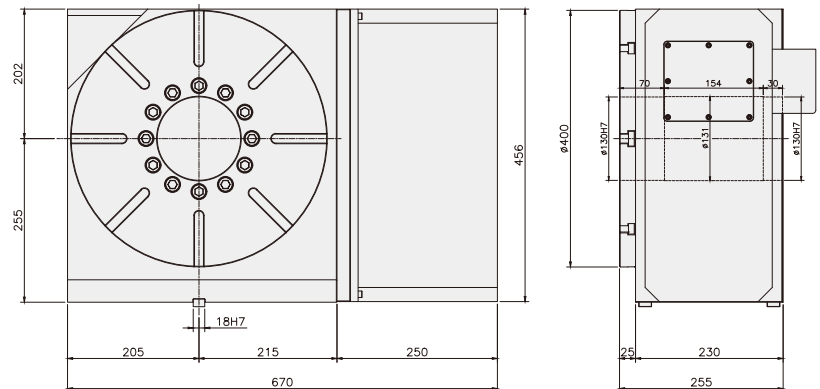
機種 MODEL		單位 UNIT	GTR320	GTR400	GTR500	
盤面直徑 Disk diameter		mm	φ320	φ400	φ500	
中心高度 Center height		mm	210	255	310	
中心孔径 Center aperture		mm	φ100H7	φ130H7	φ180H7	
貫通孔徑 Through aperture		mm	φ100	φ130	φ180	
盤面T槽寬度 T-slot width		mm	14H7	14H7	18H7	
定位鍵寬度 Positioning key width		mm	18h7	18h7	18h7	
電機標配規格 (直軸電機) (其它規格品牌諮詢定制) Motor standard specification (direct shaft motor) (Other specifications, brand consultation and customization)		FANUC	α	α iF12	α iF12	α iF12
			β	β iF22	β iF22	β iF22
		MITSUBISHI		HF204S	HF204S	HF204S
		SIEMENS		IFK7083	IFK7083	IFK7083
減速比 Reduction ratio			1:60	1:80	1:96	
最高轉速 Maximum speed		r.p.m	50	37.5	32	
最小設定單位 Minimum setting unit		deg	0.001	0.001	0.001	
割出精度 Cutting accuracy		sec	±10	±10	±10	
重復精度 Repeatability		sec	4	4	4	
鎖緊動力源壓力 Lock the power source pressure		MPa	油壓 Oil pressure 4±0.5	油壓 Oil pressure 4±0.5	油壓 Oil pressure 4±0.5	
最大切削扭矩 (剎車) Maximum cutting torque (brake)		Nm	1550	2100	2800	
容許 載重 Allowable load	立式安裝 Vertical installation 	Kg	210	300	400	
	臥式安裝 Horizontal installation 	Kg	420	600	800	
	立式含尾座 Vertical with tailstock 	Kg	420	600	800	
容許 負荷 Allowable load	F 	N	26000	45000	61000	
	FXL 	Nm	1550	2100	2800	
	FXL 	Nm	2500	4500	7500	
容許慣性容量 Allowable inertia capacity		Kg.m <sup>2</sup>	5	11	22	
重量 weight		Kg	175	300	390	

## 機械外型圖 Specification

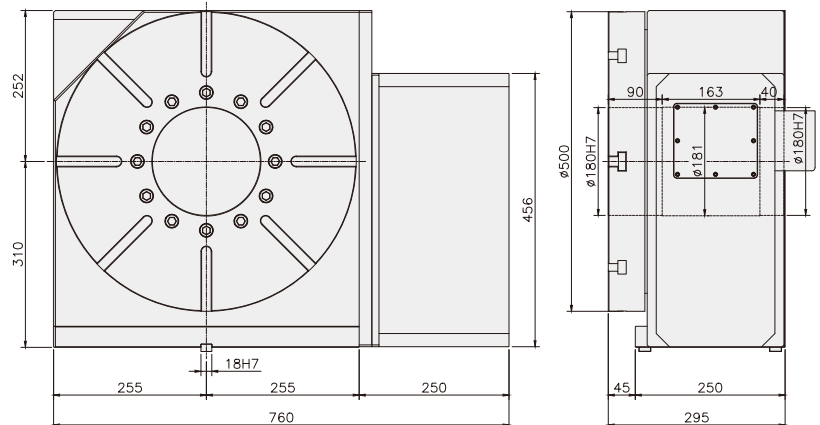
### GTR320



### GTR400



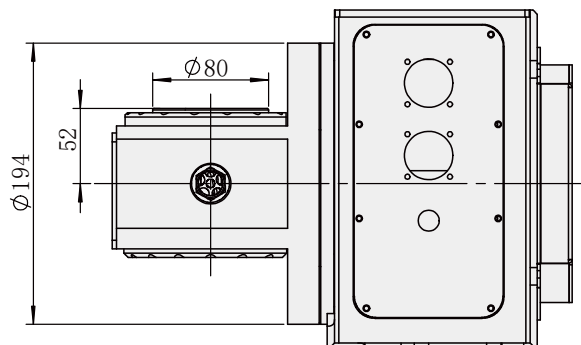
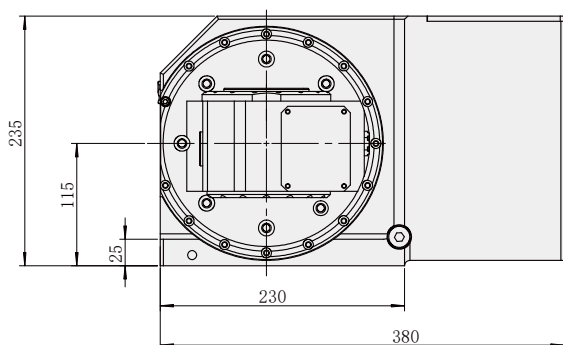
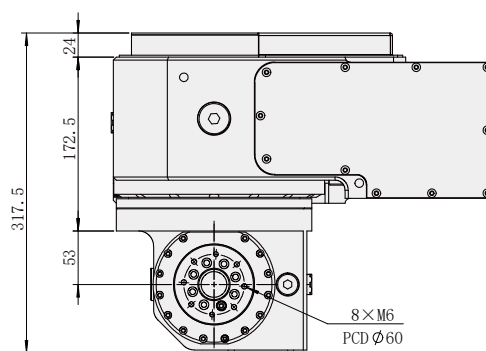
### GTR500



## 機械參數及外型 Specification

機種 MODEL	單位 UNIT	GTA80		GTA130X	
盤面直徑 Disk diameter	mm	φ80		φ130	
0°時工作盤面高度 Height of working plate at 0°	mm	167		175	
90°時工作盤面中心高度 Center height of working plate at 90°	mm	115		115	
貫通孔徑 Through aperture	mm	φ25		φ25	
中心孔徑 Center aperture	mm	φ30H7		φ30H7	
定位鍵 Positioning key	mm	14h7		14h7	
盤面T槽寬度 T-slot width	mm	N/A		N/A	
使用馬達 Use motor		旋轉軸	傾斜軸	旋轉軸	傾斜軸
	FANUC	βiF1	βiF2B	βiF1	βiF2B
	mitsubishi	HF-KP43	HF-KP73B	HF-KP43	HF-KP73B
減速比 Reduction ratio		1:40	1:60	1:40	1:60
最高轉速 Maximum speed	r.p.m	75	50	75	50
分度範圍 Index range	deg	360	±120	360	±120
割出精度 Cutting accuracy	sec	±20		±20	
重複精度 Repeat accuracy	sec	6		6	
最小設定單位 Minimum setting unit	deg	0.001		0.001	
容許載重 Allowable load	在水平 At the level	Kg		20	
	在垂直 In vertical	Kg		15	
容許慣性容量 Allowable inertia capacity	Kg.m <sup>2</sup>	0.02		0.02	

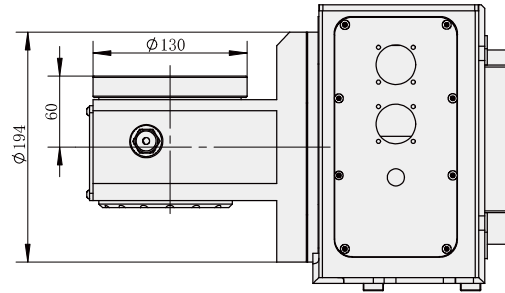
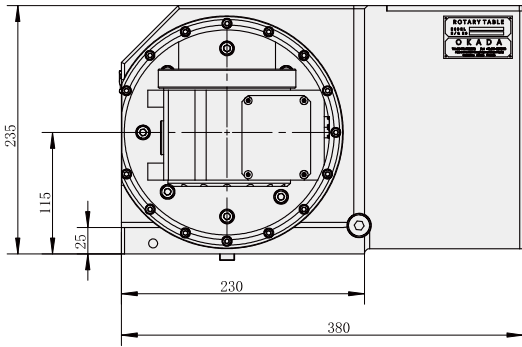
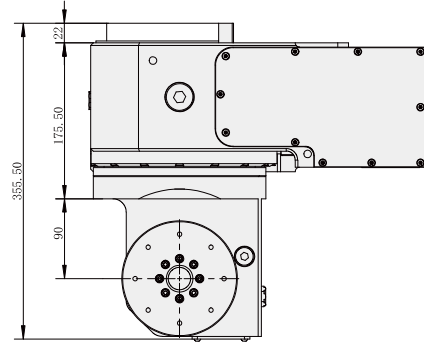
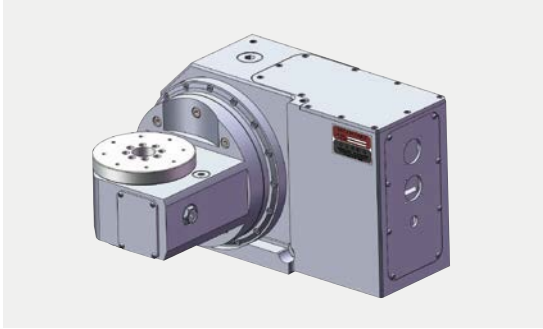
### GTA80





機械外型圖 Specification

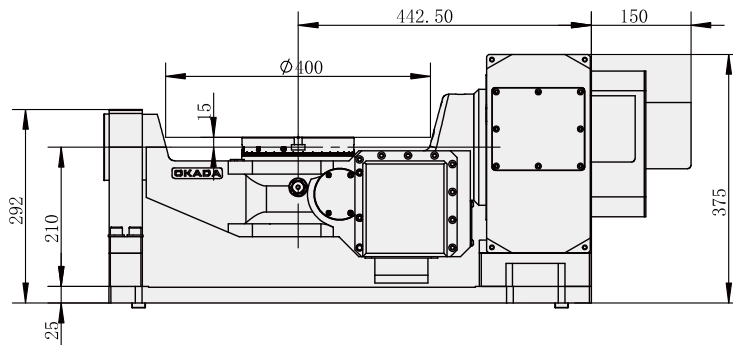
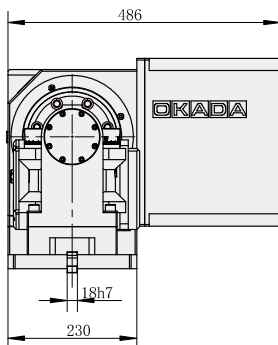
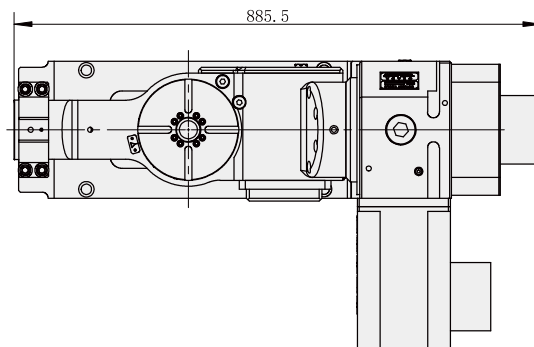
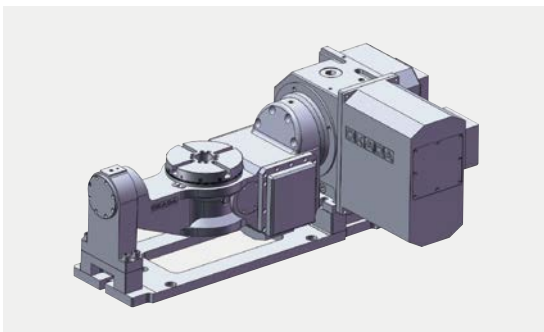
GTA130X



## 機械參數及外型 Specification

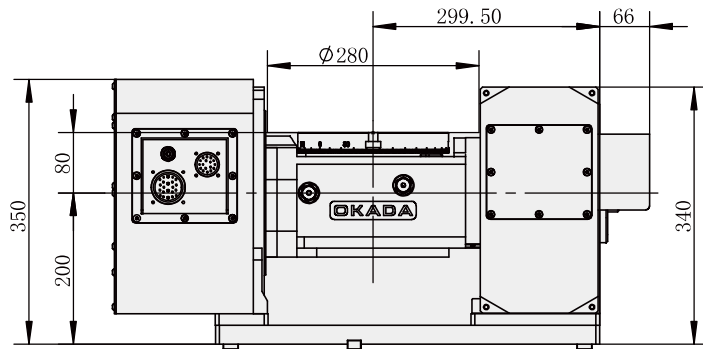
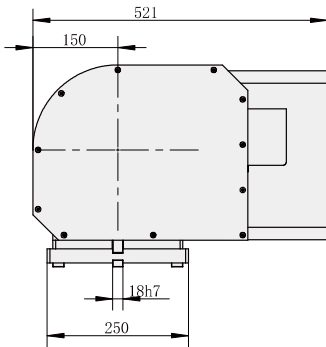
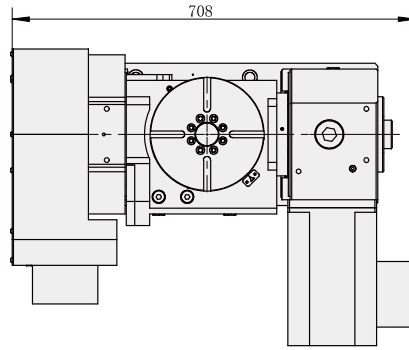
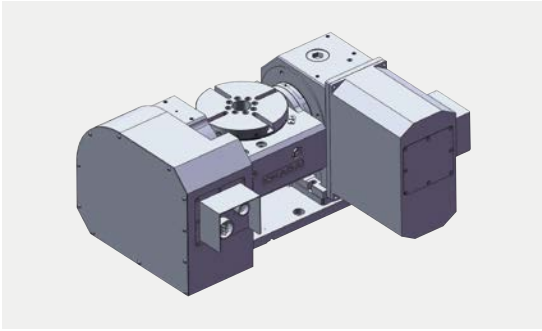
機種 MODEL	單位 UNIT	GTA170L		GTA200		GTA255	
盤面直徑 Disk diameter	mm	φ170		φ200		φ170	
0°時工作盤面高度 Height of working plate at 0°	mm	250		280		250	
90°時工作盤面中心高度 Center height of working plate at 90°	mm	250		200		250	
貫通孔徑 Through aperture	mm	φ30H7		φ40		φ30H7	
中心孔徑 Center aperture	mm	φ40H7		φ40H7		φ40H7	
定位鍵 Positioning key	mm	N/A		N/A		N/A	
盤面T槽寬度 T-slot width	mm	φ12H7		φ12H7		φ12H7	
使用馬達 Use motor		旋轉軸	傾斜軸	旋轉軸	傾斜軸	旋轉軸	傾斜軸
	FANUC	βiF4	βis8B	βis8	βis8B	βis8	βis8B
	MITSUBISHI	HG105	HG154B	HG104	HG154B	HG154	HG154B
減速比 Reduction ratio		1:50	1:50	1:50	1:50	1:50	1:50
最高轉速 Maximum speed	r.p.m		60	60	60	60	60
分度範圍 Index range	deg	±120		±100		±120	
割出精度 Cutting accuracy	sec	±20	±25	±15	±20	±10	±20
重複精度 Repeat accuracy	sec	6	6	6	6	6	6
最小設定單位 Minimum setting unit	deg	0.001		0.001		0.001	
容許載重 Allowable load	在水平 At the level	Kg		80		120	
	在垂直 In vertical	Kg		60		90	
容許慣性容量 Allowable inertia capacity	Kg.m <sup>2</sup>	0.13		0.7		1.1	

### GTA170L

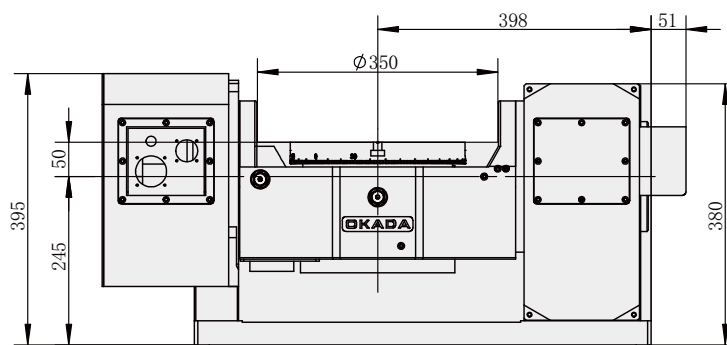
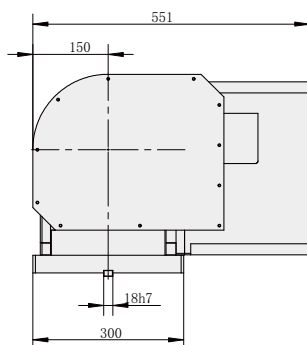
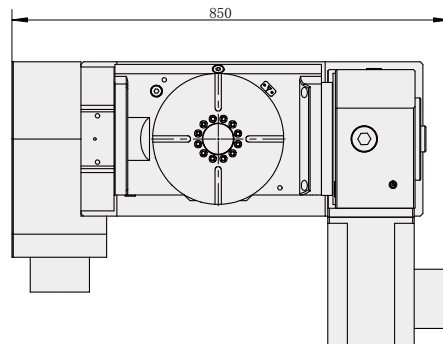
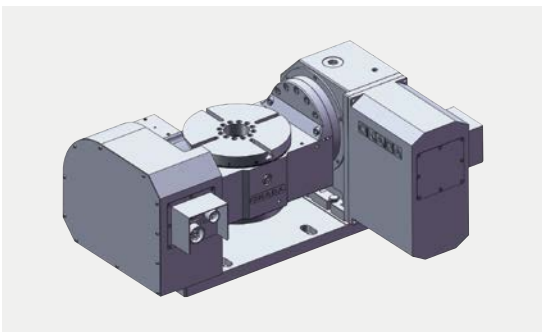


機械外型圖 Specification

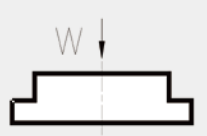
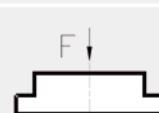

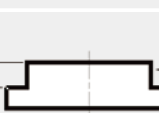
**GTA200**



**GTA255**



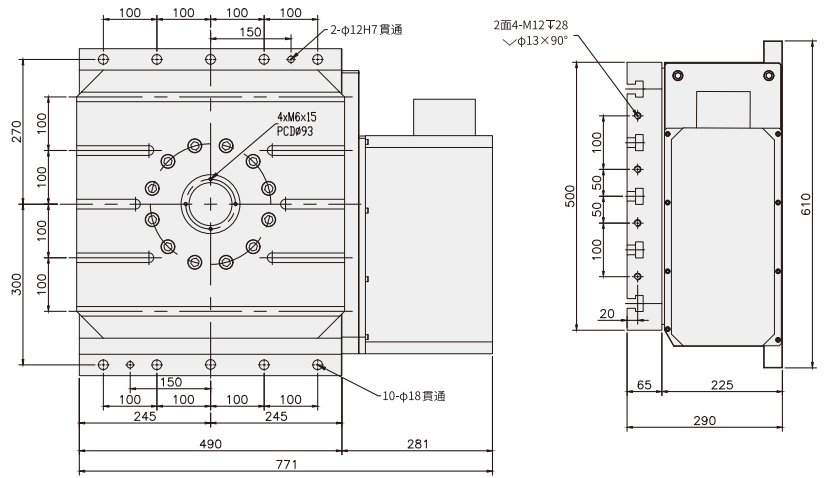
## 機械式樣表 Specification

機種 MODEL	單位 UNIT	GTH500	GTH630	GTH800	GTH1000	
盤面直徑 Disk diameter	mm	500*500	630*630	800*800	1000*1000	
旋轉高度 Rotating highly	mm	290	350	390	395	
中心孔径 Center aperture	mm	φ100H7	φ125H7	φ125H7	φ125H7	
貫通孔徑 Through aperture	mm	φ80	φ95	φ95	φ95	
盤面T槽寬度 T-slot width	mm	18H7	18H7	22H7	22H7	
電機標配規格 (直軸電機) (其它規格品牌諮詢定制) Motor standard specification (direct shaft motor) (Other specifications, brand consultation and customization)	FANUC	α	α iF12	α iF12	α iF12	
		β	β iF22	β iF22	β iF22	
	MITSUBISHI	HF204S	HF354S	HF354S	HF354S	
	SIEMENS	IFK7083	IFK7083	IFK7083	IFK7083	
減速比 Reduction ratio		1:80	1:96	1:100	1:100	
最高轉速 Maximum speed	r.p.m	25	20	20	20	
最小設定單位 Minimum setting unit	deg	0.001	0.001	0.001	0.001	
割出精度 Cutting accuracy	sec	±10	±10	±10	±10	
重復精度 Repeatability	sec	4	4	4	4	
鎖緊動力源壓力 Lock the power source pressure	MPa	油壓 Oil pressure 4±0.5	油壓 Oil pressure 4±0.5	油壓 Oil pressure 4±0.5	油壓 Oil pressure 4±0.5	
最大切削扭矩 (剎車) Maximum cutting torque (brake)	Nm	2780	4820	7950	8050	
鎖緊扭力 Tightening torque	Nm	2780	4820	7950	8050	
連續切削扭矩 Continuous cutting torque	Nm	1650	2940	4150	4200	
容許載重 Allowable load		Kg	820	1230	2050	2100
容許負荷 Allowable load	F 	N	59500	66600	107600	110300
	FXL 	Nm	2780	4820	7950	8050
	FXL 	Nm	8100	9730	13100	13400
重量 weight	Kg	390	830	1100	1300	

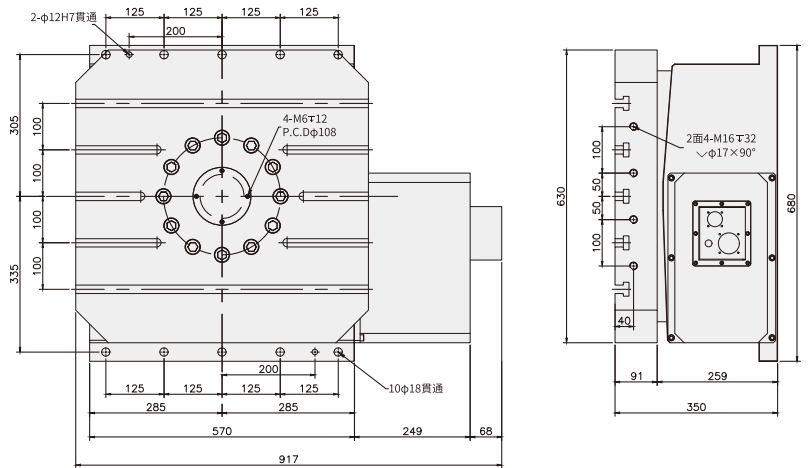
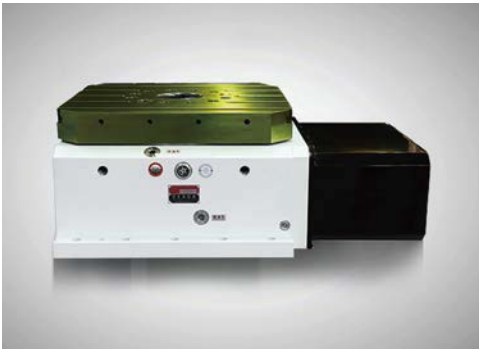


## 機械外型圖 Specification

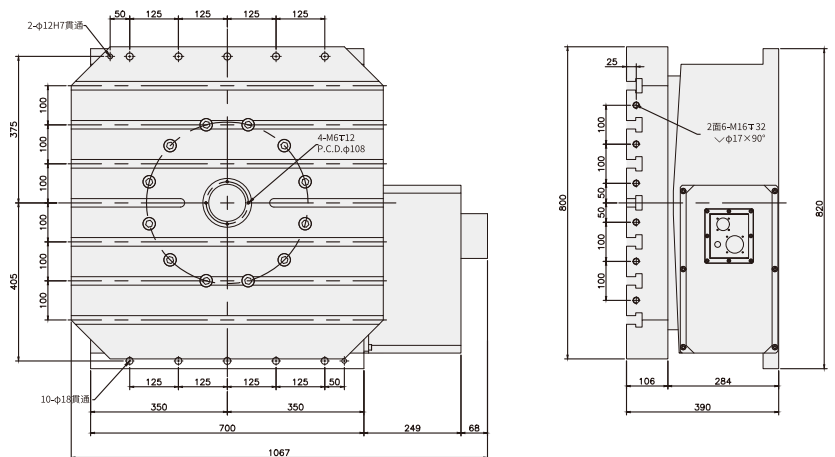
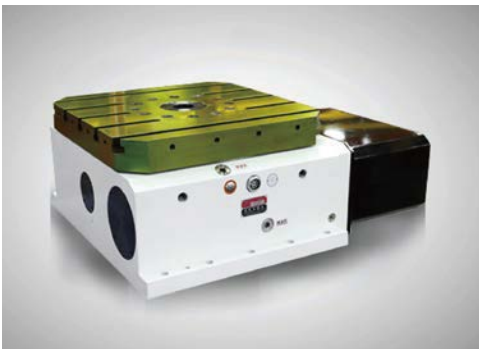
### GTH500



### GTH630

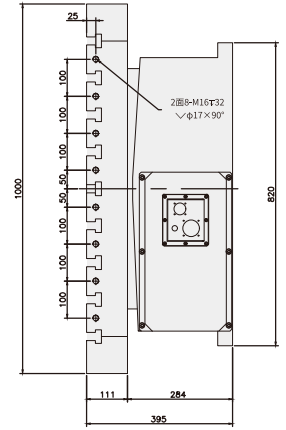
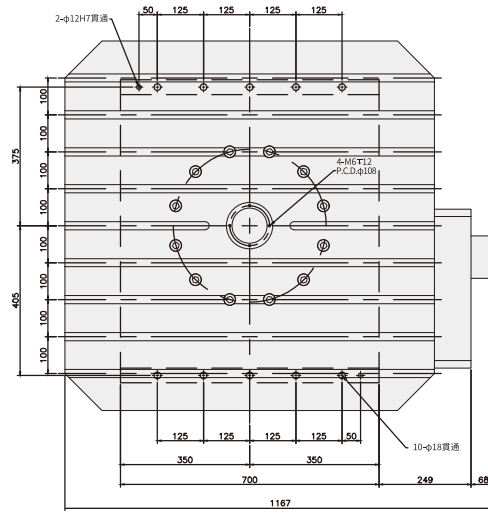
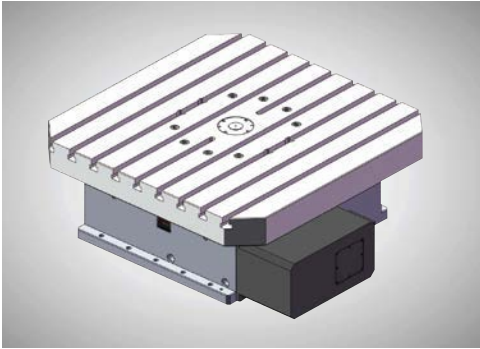


### GTH800



# 機械外型圖 Specification

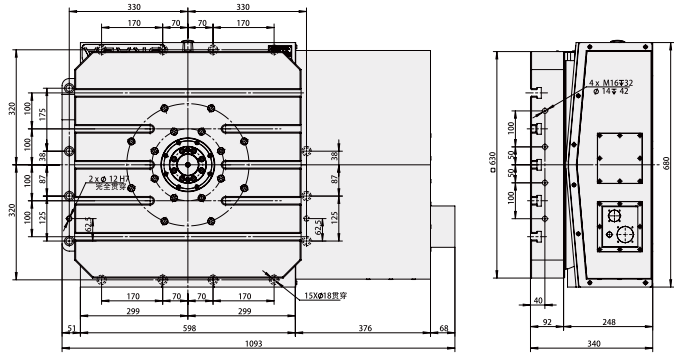
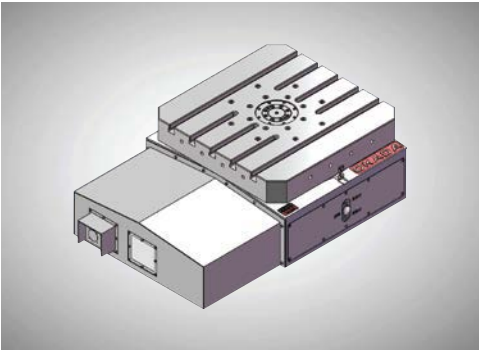
## GTH1000



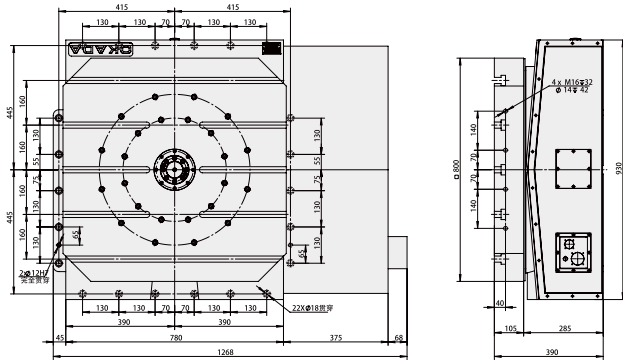
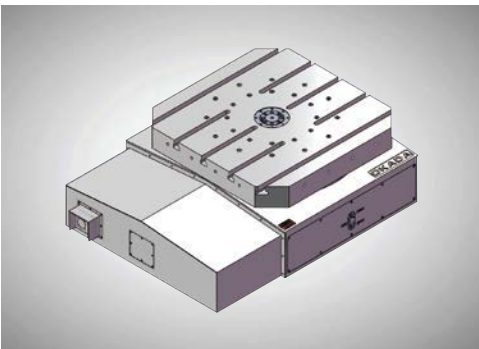


# 機械外型圖 Specification

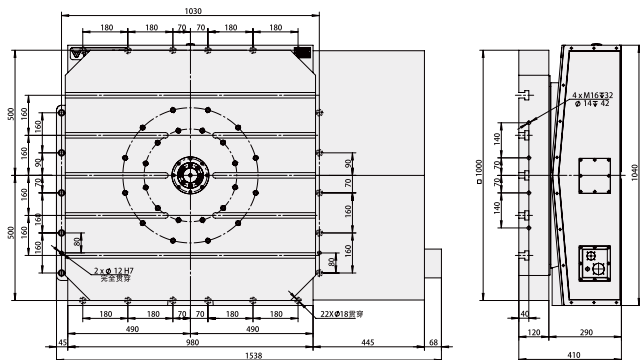
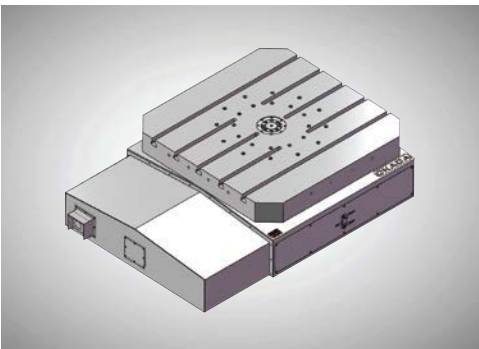
## GWH630-C



## GWH800-C



## GWH1000-C





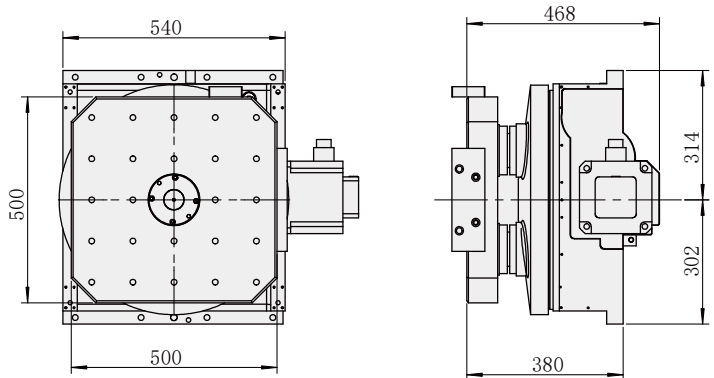
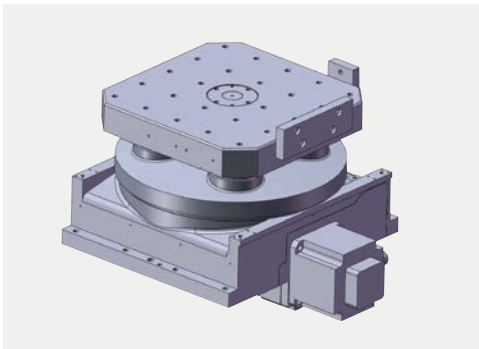
## 機械參數及外型 Specification

機種 MODEL	單位 UNIT		GTH500A	GTH630A	GTH800A
盤面尺寸 Disk diameter	mm		500*500	630*630	800*800
機台高度 Rotating highly	mm		380	480	535
中心孔徑 Center aperture	mm		φ50H7	φ50H7	φ50H7
盤面T槽寬度 T-slot width	mm		18H7	18H7	22H7
電機標配規格(直軸電機) (其它規格品牌諮詢定制) Motor standard specification (direct shaft motor) (Other specifications, brand consultation and customization)	FANUC	α	α iF12	α iF22	α iF22
		β	β iF22	β iF22	β iF22
	MITSUBISHI		HF204	HF354	HF354
	SIEMENS		IFK7083	IFK7084	IFK7084
減速比 Reduction ratio			1:80	1:96	1:100
最高轉速 Maximum speed	r.p.m		37	31	30
最小設定單位 Minimum setting unit	deg		0.001	0.001	0.001
割出精度 Cutting accuracy	sec		±10	±10	±10
重復精度 Repeatability	sec		4	4	4
鎖緊動力源壓力 Lock the power source pressure	MPa		油壓 Oil pressure 4±0.5	油壓 Oil pressure 4±0.5	油壓 Oil pressure 4±0.5
最大切削扭矩(剎車) Maximum cutting torque (brake)	Nm		2700	4600	7800
重量 weight	Kg		580	1150	1350

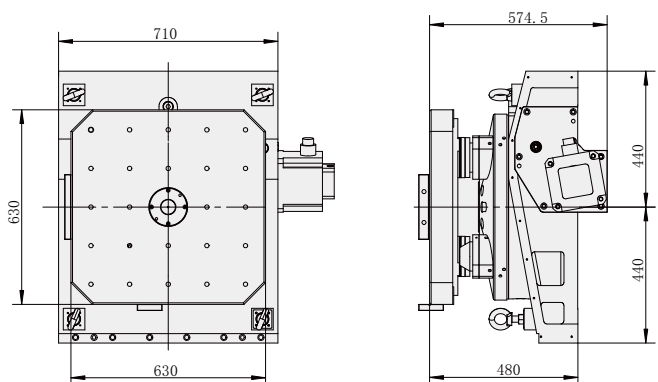
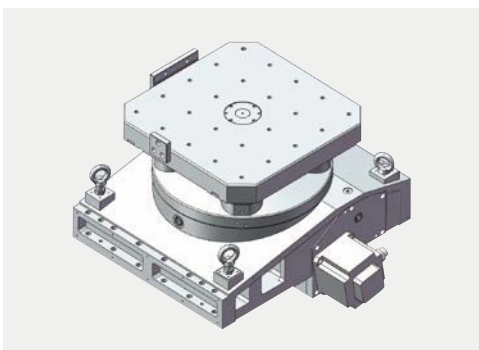


# 機械外型圖 Specification

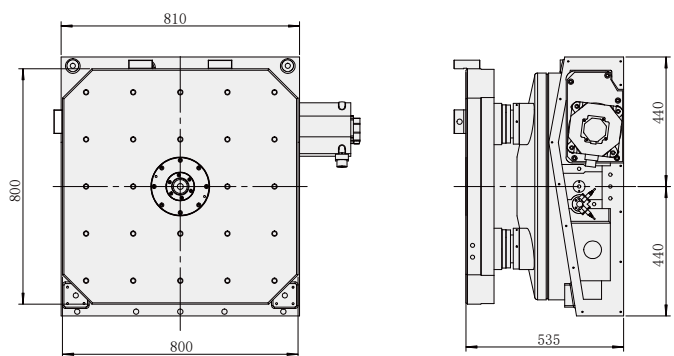
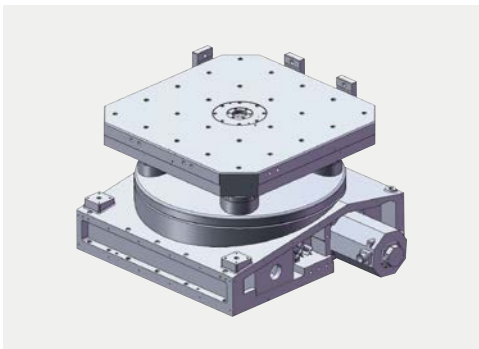
## GTH500A



## GTH630A



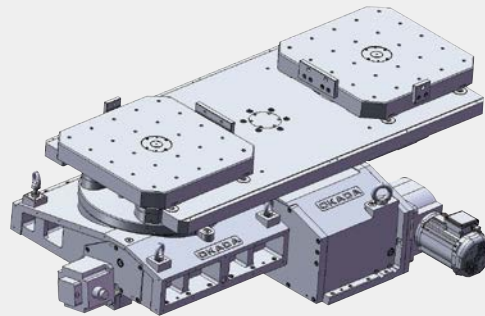
## GTH800A



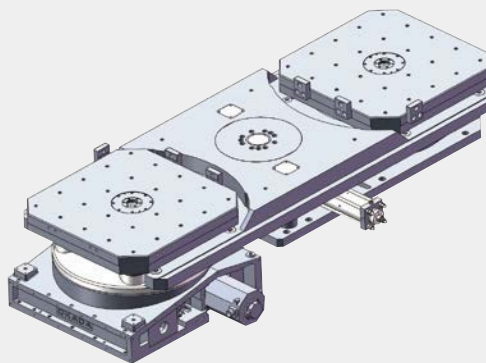
## 機械參數及外型 Specification

機種 MODEL	單位 UNIT	GPC500	GPC630Y	GPC800P
盤面尺寸 Disk diameter	mm	500*500	630*630	800*800
盤面重量 Disk weight	kg	150*2	300*2	600*2
乘載重量 Load weight	kg	600*2	1200*2	2000*2
托盤重量 Pallet weight	kg	250	450	700
回轉角度 Rotation angle	deg	180		
交換時間 Exchange time	sec	8	8	14
驅動方式 Drive method	上升	凸輪	油壓6MPa	油壓7MPa
	旋轉	凸輪	凸輪	油壓3.5MPa
電機規格 Motor specifications	kw	1.5	1.5	—

### GTH630A+GPC630Y

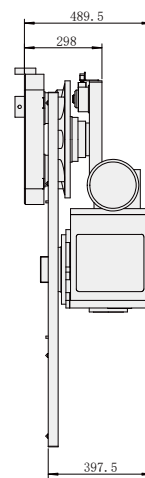
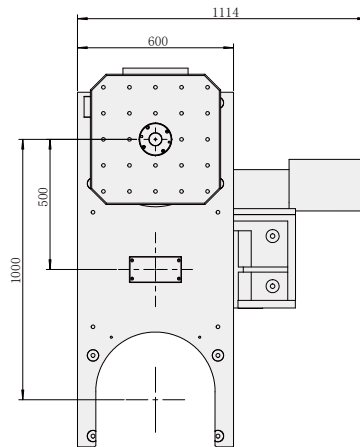
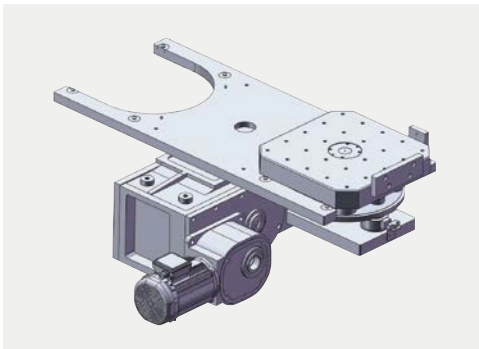


### GTH800A+GPC800P

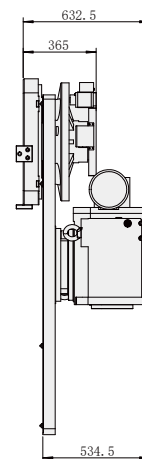
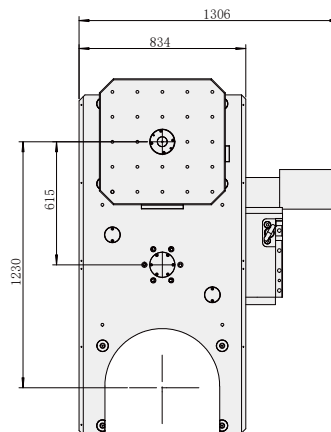
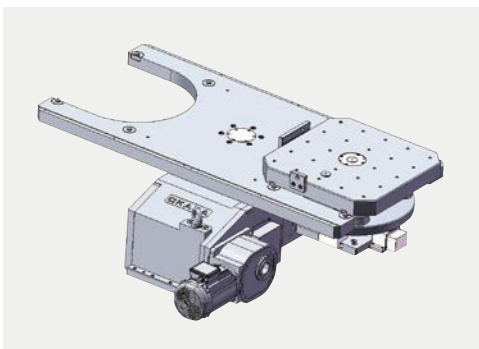


# 機械外型圖 Specification

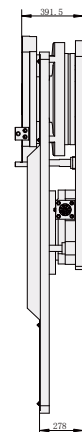
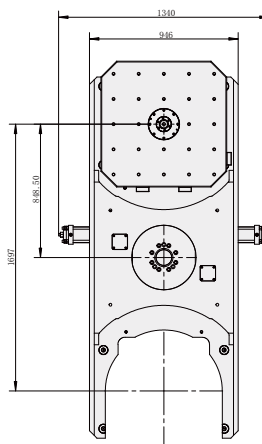
## GPC500



## GPC630Y



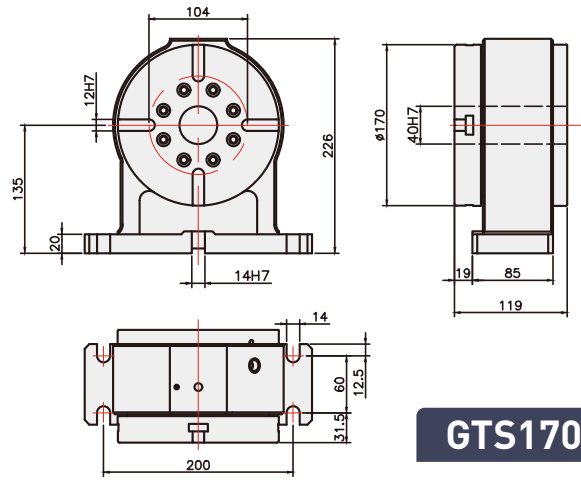
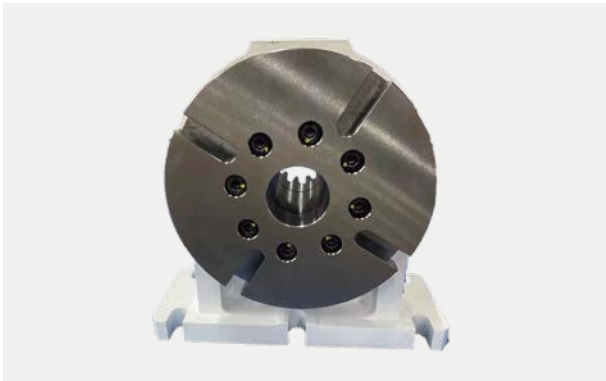
## GPC800P



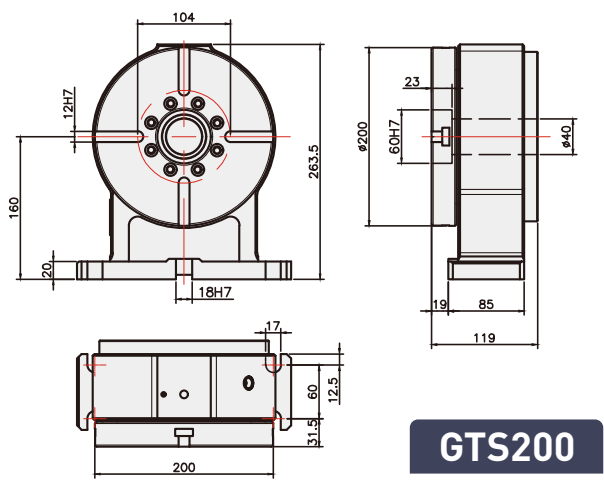


機械外型圖 Specification

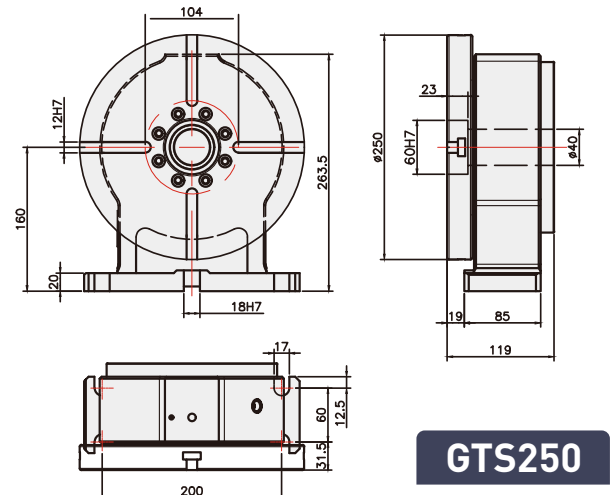
圓盤尾座 GTS 系列



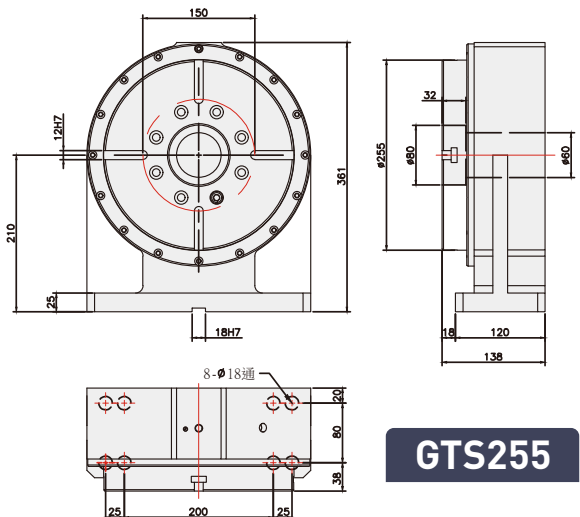
GTS170



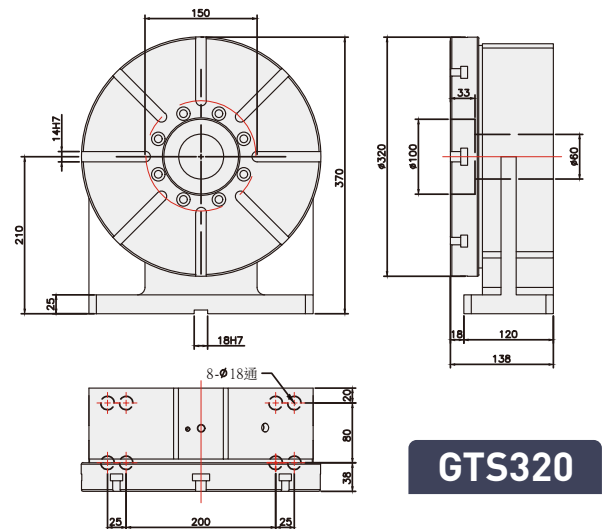
GTS200



GTS250



GTS255

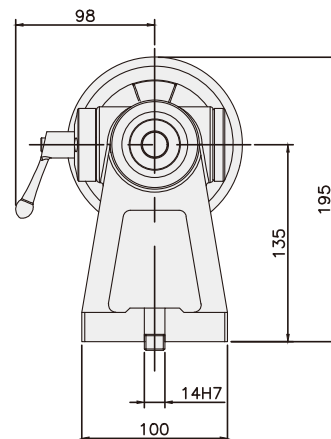
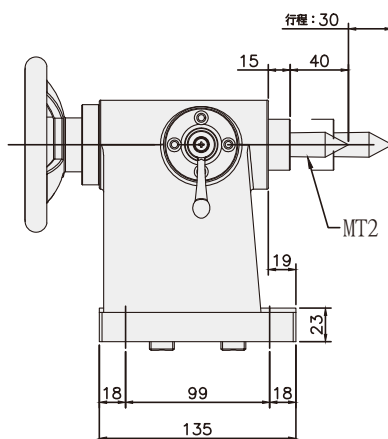


GTS320

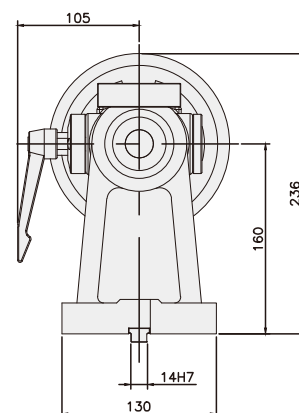
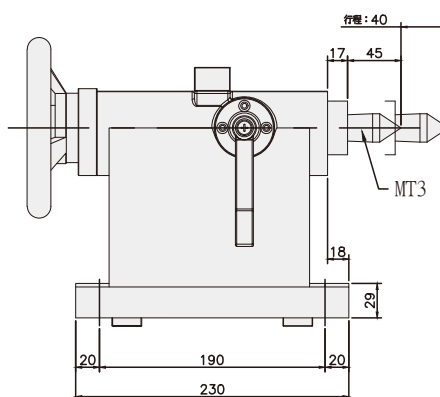
# 機械外型圖 Specification

## 頂針尾座 GTT 系列

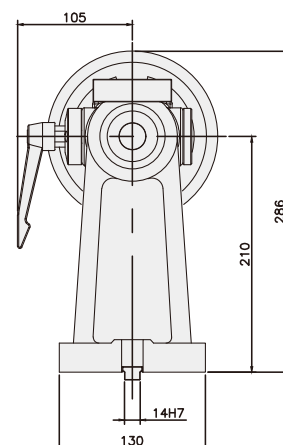
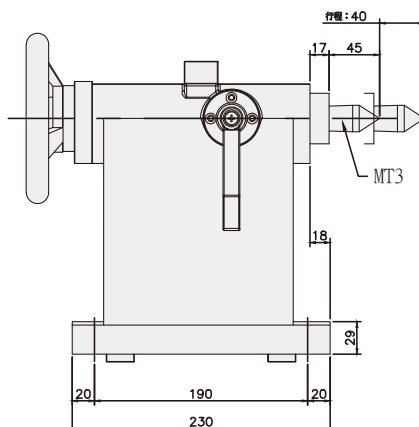
### GTT170



### GTT200、GTT250



### GTT255、GTT320



## 功能附件 Functional accessories

### 氣液增壓缸



適用於油剎轉台 + 尾座時  
工作速度快，調壓簡單，能耗低，占用空間小。  
Suitable for oil brake turntable + tailstock  
The working speed is fast, the pressure adjustment is simple, the energy consumption is low, and the space is small.

### 液壓站



適用於油剎轉台 + 尾座 + 油壓夾具時  
油箱容量大，適用於多回路油壓需求。具有低噪音及低溫升特點。

Suitable for oil brake turntable + tailstock + hydraulic clamp  
The oil tank has a large capacity, which is suitable for multi-circuit oil pressure requirements. It has the characteristics of low noise and low temperature rise.

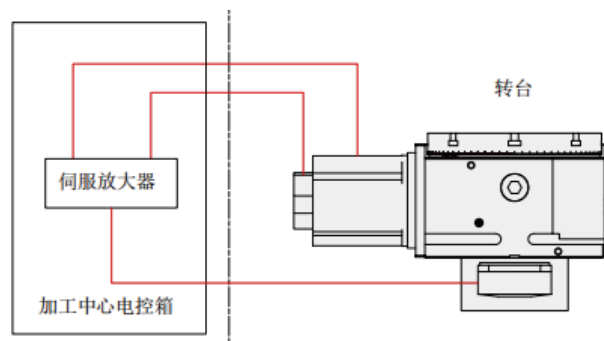
### 角度編碼器

#### 海德漢角度編碼器Heidenhain angle encoder

光學尺型號 Optical ruler model	光學尺精度 Optical ruler accuracy
RCN—23XX系列	±5
ECN—22X系列	±10

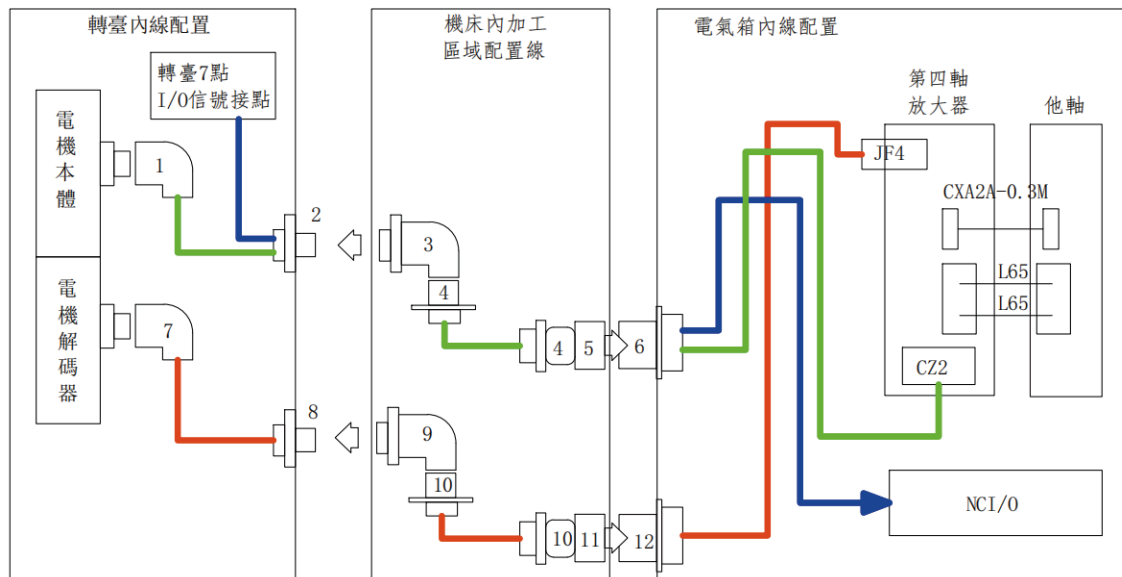
#### 發格角度編碼器Fagor angle encoder

H2A—D90系列	±2.5/±5
H2A—D87系列	±10

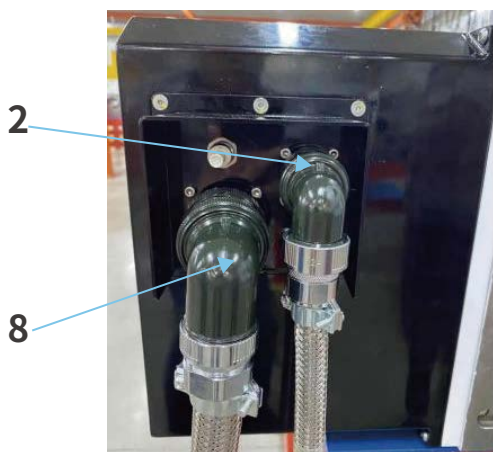


# 電氣配線示意圖 Functional accessories

## 日系機床配線示意圖



軍規接頭編碼規格	2 MS3102A28-11P	3 MS310A28-11S	5 MS3106A28-11P	6 MS3102A28-11S
軍規接頭編碼規格 FANUC/17Pin	8 MS3102A20-29PW	9 MS3108A20-29SW	11 MS3106A20-29PW	12 MS3102A20-29SW
MITSUBISHI/17Pin	MS3102A20-29P	MS3108A20-29S	MS3106A20-29P	MS3102A20-29S
MITSUBISHI/19Pin	MS3102A22-14P	MS3108A22-14S	MS3106A22-14P	MS3102A22-14S



### 採用我司標準配線方式時:

When using our standard wiring method:

動力線信號線分開兩條的轉接對插式出線示意圖

我司可提供內部線: 1~2 動力線, 7~8 回授線及轉臺 7 個 I/O 信號接點

我司可提供外部線: 3~6 及 9~12 這兩段的線材

Schematic diagram of the plug-in outlet with two separate power lines and signal lines

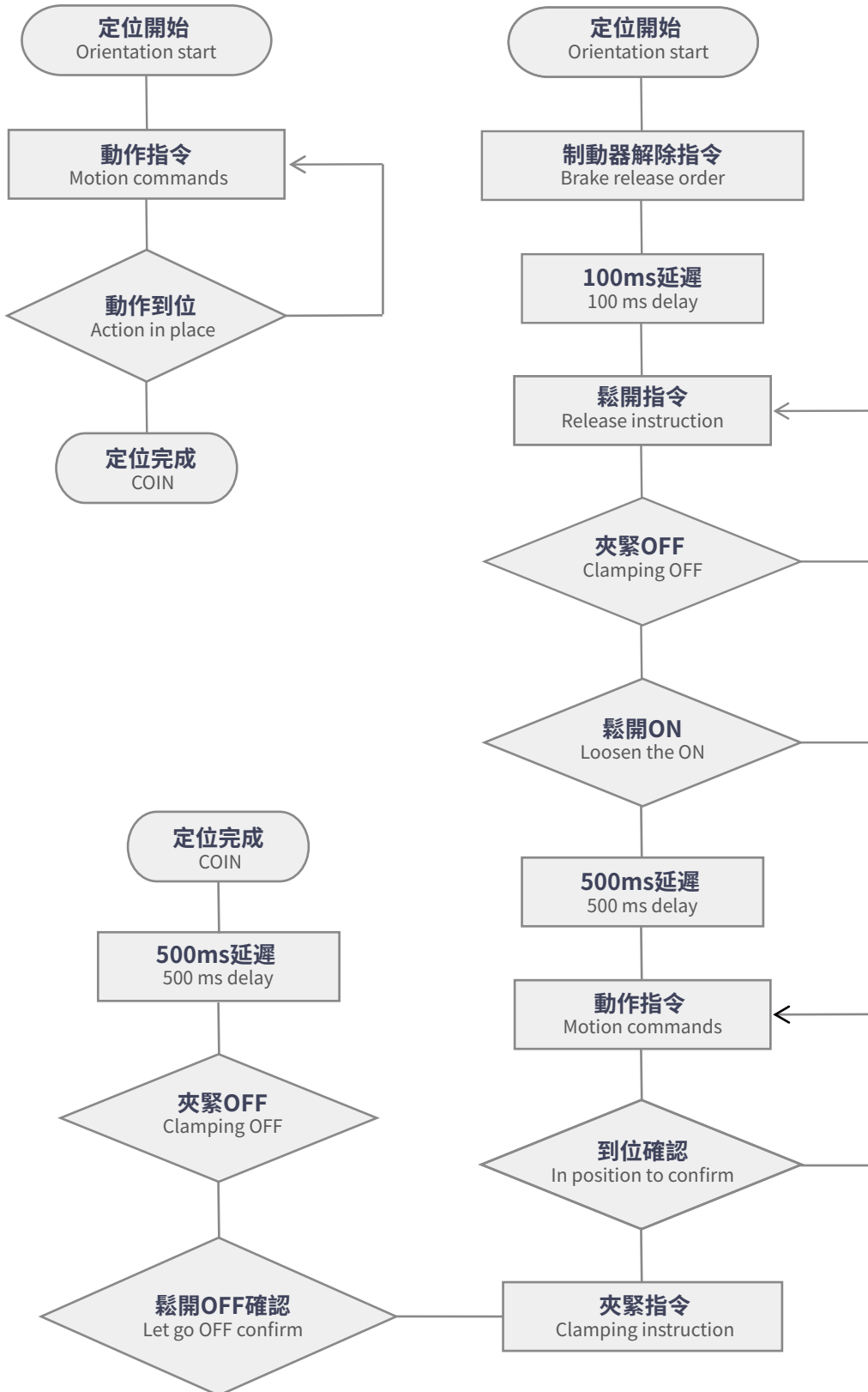
**Our company can provide internal lines:** 1~2 power lines, 7~8 feedback lines and 7 I/O signal contacts for the turntable

**Our company can provide external wires:** 3~6 and 9~12 two sections of wire

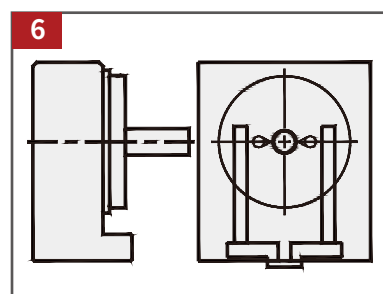
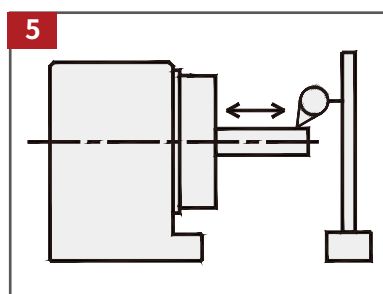
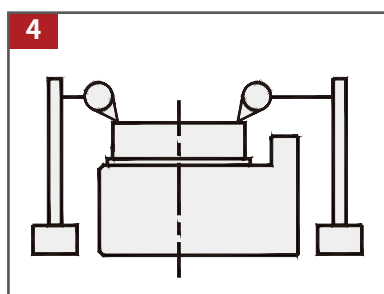
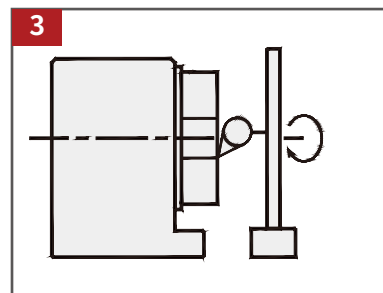
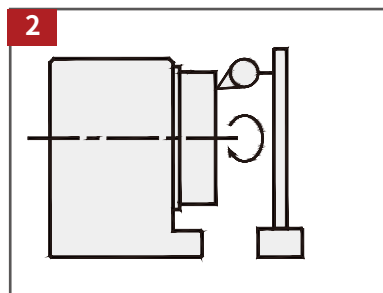
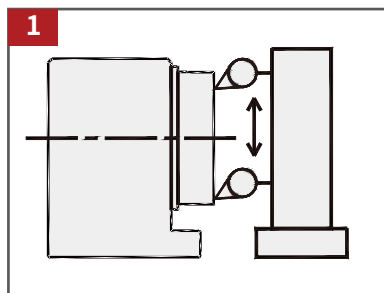




剎車控制說明 Brake control instructions



## 精度檢查項目 Accuracy Stanard



NO.	項目PROJECT	125~500 單位:mm
1	轉盤與本體底部之垂直度 Perpendicularity of the dial to the bottom of the body	0.02
2	轉盤旋轉振幅 Rotary amplitude	0.015
3	轉盤中心孔旋轉偏擺 The center hole of the turntable rotates deflect	0.01
4	轉盤與本體之平行度 Parallelism between the rotary table and the body	0.02
5	轉盤中心與本體底部之平行度 Parallelism between the center of the turntable and the bottom of the body	0.02
6	轉盤中心與基準塊之平行度 Parallelism between the center of the turntable and the reference block	0.02

## 轉臺規格選擇表 Check sheet for rotary table specifications

機台規格 Rotary Tables	機床規格 Machine specifications	品牌Brand _____ 型號Model number _____
	機床控制器 Machine Tool Controller	<input type="checkbox"/> 發那科FANUC <input type="checkbox"/> 三菱Mitsubishi <input type="checkbox"/> 西門子Siemens <input type="checkbox"/> 新代New Generation <input type="checkbox"/> 安川Yaskawa <input type="checkbox"/> 其他Others
	配線 Wiring	<input type="checkbox"/> 需要Need <input type="checkbox"/> 僅需要動力內線Only need power inside <input type="checkbox"/> 需要動力內線/信號內線Need power extension/signal extension
機床工作臺 Machine tool table	T槽寬 (A) T slot width (A)	<input type="checkbox"/> 14mm <input type="checkbox"/> 16mm <input type="checkbox"/> 18mm <input type="checkbox"/> 22mm <input type="checkbox"/> 其他Other
	T槽間距尺寸 (B) T slot spacing size (B)	<input type="checkbox"/> 100mm <input type="checkbox"/> 125mm <input type="checkbox"/> 150mm <input type="checkbox"/> 其他Other
	工作臺T槽數 Number of T Slots of Workbench	<input type="checkbox"/> 3 <input type="checkbox"/> 4 <input type="checkbox"/> 5 <input type="checkbox"/> 6 <input type="checkbox"/> 其他Other
數控轉臺 CNC turntable	機型代號 Model code	<input type="checkbox"/> GTR <input type="checkbox"/> GTH <input type="checkbox"/> GTS <input type="checkbox"/> GTT <input type="checkbox"/> GTA
	剎車夾緊方式 Brake clamping method	<input type="checkbox"/> 氣剎 Air brake <input type="checkbox"/> 油剎 (請選用其他配件) Oil brake (please choose other accessories)
	接線盒位置 Junction box location	<input type="checkbox"/> 側方 Side <input type="checkbox"/> 後方 Rear
	動力/信號 線出線方式 Power/Signal Wire outlet method	<input type="checkbox"/> 標準軍規接頭 Standard military connector <input type="checkbox"/> 貼壁式接頭 <input type="checkbox"/> Wall-mounted connector
	發那科 FANUC	<input type="checkbox"/> 型號Model: _____ <input type="checkbox"/> 直軸Straight shaft <input type="checkbox"/> 錐軸Taper shaft
伺服電機規格 Servo motor specifications	三菱 Mitsubishi	<input type="checkbox"/> 型號Model: _____ <input type="checkbox"/> 直軸Straight shaft <input type="checkbox"/> 錐軸Taper shaft
	西門子 Siemens	<input type="checkbox"/> 型號Model: _____
	新代 New generation	<input type="checkbox"/> 型號Model: _____
	安川 Yaskawa	<input type="checkbox"/> 型號Model: _____
	其他 other	<input type="checkbox"/> 型號Model: _____ (請提供電機外形尺寸圖及資料) (please provide motor dimensions and information)
	尾座 (特別附件) Tailstock (special accessory)	可換式手動頂尖尾座 Interchangeable hands Moving top tailstock
	圓盤剎車尾座 Disc brake tailstock	<input type="checkbox"/> GTS-125 <input type="checkbox"/> GTS170 <input type="checkbox"/> GTS200 <input type="checkbox"/> GTS255 <input type="checkbox"/> GTS320 <input type="checkbox"/> 其他Other
操作說明 Instructions	操作維護說明書 Operation and maintenance instructions	<input type="checkbox"/> 中文 CHINESE <input type="checkbox"/> 英文 ENGLISH

**OKADA**

臺灣岡田精機股份有限公司  
TAIWAN OKADA MACHINERY CO., LTD.



**臺灣岡田精機股份有限公司**

TAIWAN OKADA MACHINERY CO., LTD.

---

**臺灣地址 Add:** 臺灣臺中市太平區鵬儀路 214 巷

Lane 214, Pengyi Road, Taiping District, Taichung City,  
Taiwan

**大陸地址 Add:** 江蘇省常州市金壇區晨風路 1188 號

No. 1188, Chenfeng Road, Jintan District, Changzhou City,  
Jiangsu Province

**電話 Phone:** 0519-68229566

**傳真 Fax:** 0519-68229568

**郵箱 Email:** web@okada-china.com

**網址 Web:** www.okada-china.com

---